



The **WISE** Choice

EASTMAN WORLD

Eastman has a strong global presence and has tailored its products to meet the needs of the export market, providing high-quality energy storage and solar solutions.



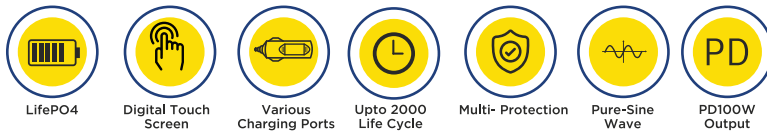
LIFEPO₄ ENERGY
PORTABLE POWER STATION

CONTENT

PORTABLE POWER STATION

1. EM250-PS	03
2. EM500-PS	04
3. EM1000-PS	04
4. EM500-PSH	05
5. EM1000-PSH	05
6. EM1500-PSH	06
7. EM2000-PSH	06

Product Features



Certification

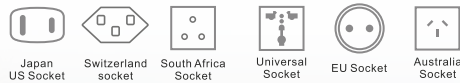


Portable Power Station

Product Specifications

MODEL : EM250-PS

Description	Parameters
Capacity	12.8V 20Ah 256Wh
Battery Type	Rechargeable LiFePo4 (Lithium Phosphate) Battery
AC Output	AC 100/240V 50HZ/60HZ
Continuous Power	300W
DC Output	4*USB/1*TYPE-C / 1*Cigarette Port /1*5521
USB-C	PD18W Output
DC 12v Port	12V/5A
DC12v Cigarette Port	12V/10A
Input	DC 12-30V 72W
Dimension	158*165*173mm
Net Weight	3.86 Kg
USB-A	5V2A,9V/2A, 12V/1.5A

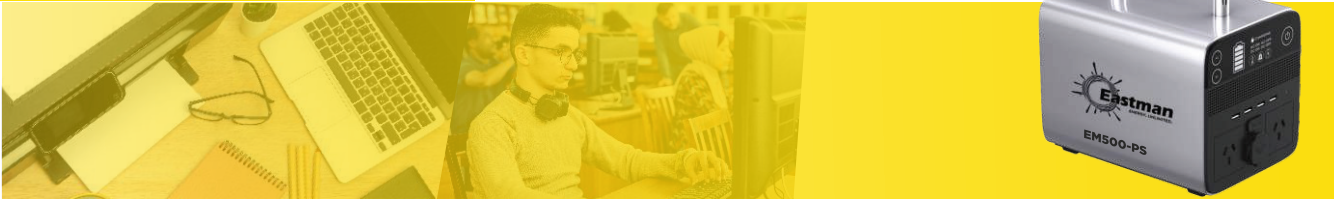


Support
100~240V 50/60HZ



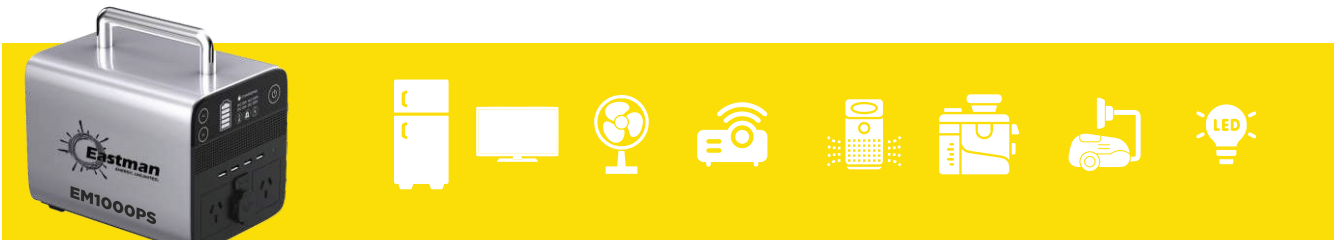
Portable Power Station

Product Specifications



MODEL : EM500-PS

Description	Parameters
Capacity	12.8V 20Ah 512Wh
Battery Type	Rechargeable LiFePo4 (Lithium Phosphate) Battery
AC Output	AC 100/240V 50HZ/60HZ
Continuous Power	750W
DC Output	4*USB/1*TYPE-C / 1*Cigarette Port /1*5521
USB-C	5V-20V / PD18W Output
DC 12v Port(5521)	12V/5A
DC12v Cigarette Port	12V/10A
Input	DC 12-30V 200W MPPT
Dimension	250*165*173 mm
Net Weight	7.5 Kg
USB-A	5V-12V18W

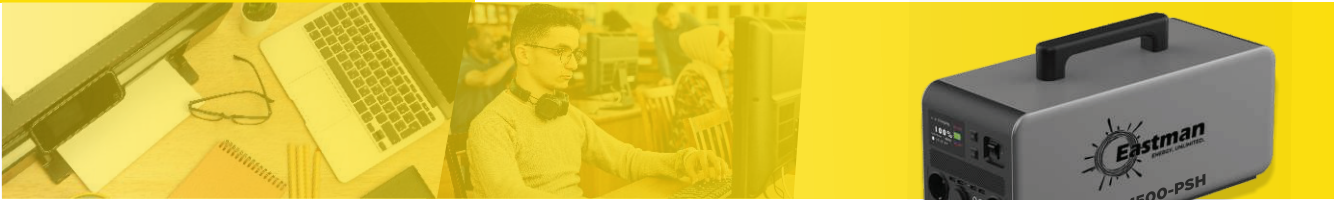


MODEL : EM1000-PS

Description	Parameters
Capacity	25.6V 40.5Ah 1036Wh
Battery Type	Rechargeable LiFePo4 (Lithium Phosphate) Battery
AC Output	AC 100/240V 50HZ/60HZ
Continuous Power	1000W
DC Output	4*USB/1*TYPE-C / 1 Cigarette Port 6. USB-A: 5V-12V,18W
USB-C	5V-20V / PD18W Output
DC 12v Port (5521)	12V/5A
DC12v Cigarette Port	12V/10A
Input	DC 12-30V 200W MPPT
Dimension	385*165*173mm
Net Weight	12.4 Kg
USB-A	5V-12V18W

Portable Power Station

Product Specifications



MODEL : EM500-PSH



Description	Parameters
Capacity	25.6V 20Ah 512Wh
Battery Type	Rechargeable LiFePo4 (Lithium Phosphate) Battery
AC Output	AC 100/240V 50HZ/60HZ
Continuous Power	750W
DC Output	4*USB/1*TYPE-C / 2*DC (5521) / 1*Cigarette Port 6. USB-A: 5V/2A,9V/2A,12V/1.5A
USB-C	5-20V, PD100W Max
DC 12v Port	12V/5A
DC12v Cigarette Port	12V/10A
Input	DC 12-30V 200W MPPT
Dimension	:250*190*190mm
Net Weight	8.5 Kg
USB-A	5V2A,9V/2A, 12V/1.5A
EC5	12V/10A

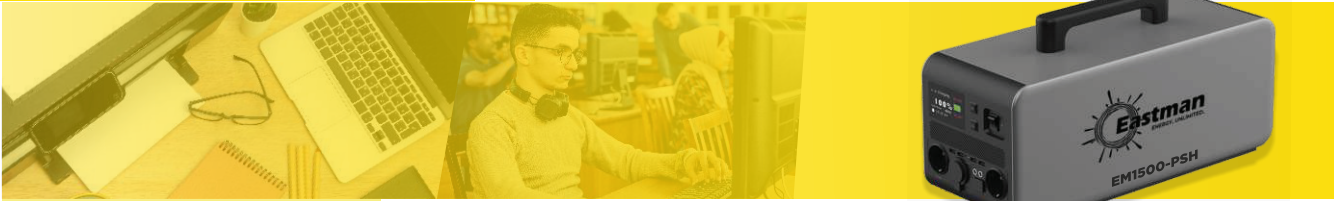


MODEL : EM1000-PSH

Description	Parameters
Capacity	25.6V 40.5Ah 1036.8Wh
Battery Type	Rechargeable LiFePo4 (Lithium Phosphate) Battery
AC Output	AC 100/220V 50HZ/60HZ
Continuous Power	1000W
DC Output	4*USB/1*TYPE-C / 1*Cigarette Port/2*5521/1*EC5
USB-C	5V-20V / PD100W Max
DC 12v Port	12V/5A
DC12v Cigarette Port	12V/10A
Input	DC 12-30V 200W MPPT
Dimension	385*190*190 mm
Net Weight	14.8 Kg
USB-A	5V2A,9V/2A, 12V/1.5A
EC5	12V/10A

Portable Power Station

Product Specifications



MODEL : EM1500-PSH

Description	Parameters
Capacity	25.6V 58.5Ah 1497.6Wh
Battery Type	Rechargeable LiFePo4 (Lithium Phosphate) Battery
AC Output	AC 100/220V 50HZ/60HZ
Continuous Power	2000W
DC Output	4*USB/1*TYPE-C / 1*Cigarette Port /2*5521/1*EC5
USB-C	5V-20V / PD100W Max
DC 12v Port	12V/5A
DC12v Cigarette Port	12V/10A
Input	DC 12-30V Max 200W (Max) MPPT
Dimension	480*190*190mm
Net Weight	19.6 Kg
USB-A	5V2A 9V/2A, 12V/1.5A
EC5	12V/10A



MODEL : EM2000-PSH

Description	Parameters
Capacity	25.6V 75Ah 1920Wh
Battery Type	Rechargeable LiFePo4 (Lithium Phosphate) Battery
AC Output	AC 100/220V 50HZ/60HZ
Continuous Power	2000W
DC Output	4*USB/2*TYPE-C /1*Cigarette Port/2*5521
USB-C	5-20V, PD100W Max
DC 12v Port	12V/5A
DC12v Cigarette Port	12V/10A
Input	DC 12-60V 500W MPPT
Dimension	405*250*250mm
Net Weight	23 Kg
USB-A	5V2A, 9V/2A, 12V/1.5A



www.eastmanworld.com
marketing@eastmanworld.com

AMPS MIDDLE EAST FZ LLC

#703, 7TH Floor, Deira Twin Tower,
Baniyas Square, Deira, Dubai (UAE)

EASTMAN AUTO & POWER LTD.

ASF Towers, 249, Udyog Vihar Phase-4, Gurugram,
Haryana-122016, India

GUANGDONG EASTMAN NEW ENERGY CO., LTD

#1602, Meilan business centre, Intersection of Xixiang Avenue
and Qianjin Second Road, Bao'an, District, Shenzhen-518102, China